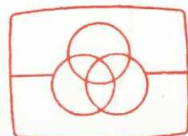


Record Player FP 320/00R

Service
Service
Service



Free service manuals
Gratis schema's

Digitized by

www.freeservicemanuals.info

Service Manual



"Pour votre sécurité, ces documents
doivent être utilisés par des spécia-
listes agréés, seuls habilités à réparer
votre appareil en panne".

Published by Consumer Electronics Printed in The Netherlands © Copyright reserved Subject to modification

4822 725 24283



PHILIPS

SPECIFICATIONS**Record player**

Power voltage	: AC220V - 230V 50Hz
Turnable speeds	: 331/3 and 45 rpm
Dimensions (w x h x d)	: 455 x 143 x 390 mm

Carridge CR2560 / CR2500

Frequency Response	: 50 - 10KHz
Sensitivity (1KHz)	: 1.5 - 4.0 mV
Trackability	: 80µm

GB

Safety regulations require that the set be restored to its original condition and that parts which are identical with those specified, be used.

F

Les normes de sécurité exigent que l'appareil soit remis à l'état d'origine et que soient utilisées les pièces de rechange identiques à celles spécifiées.

NL

Veiligheidsbepalingen vereisen, dat het apparaat bij reparatie in zijn oorspronkelijke toestand wordt teruggebracht en dat onderdelen, identiek aan de gespecificeerde, worden toegepast.

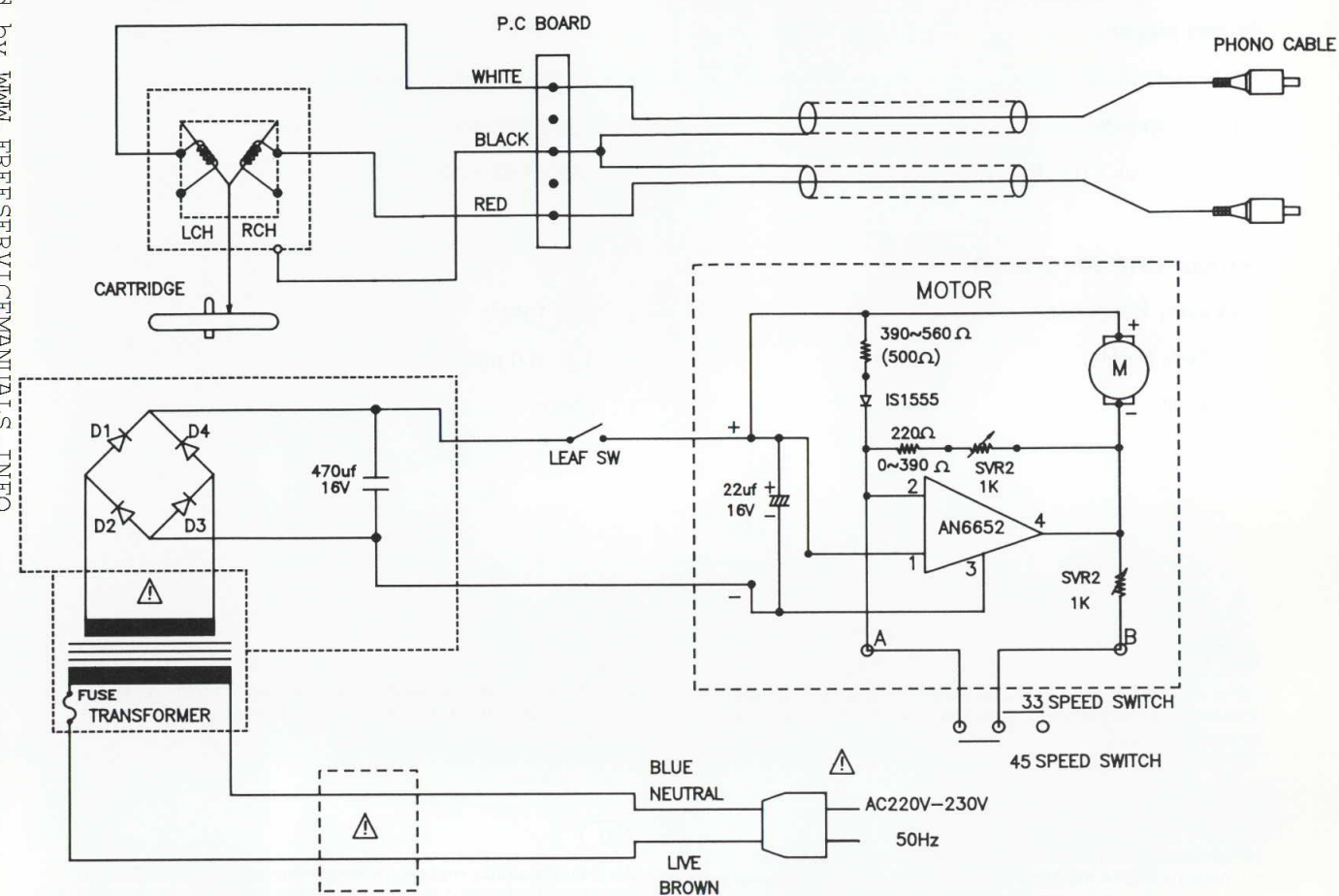
D

Bei jeder Reparatur sind die geltenden Sicherheitsvorschriften zu beachten. Der Originalzustand des Geräts darf nicht verändert werden; für Reparaturen sind Original-Ersatzteile zu verwenden.

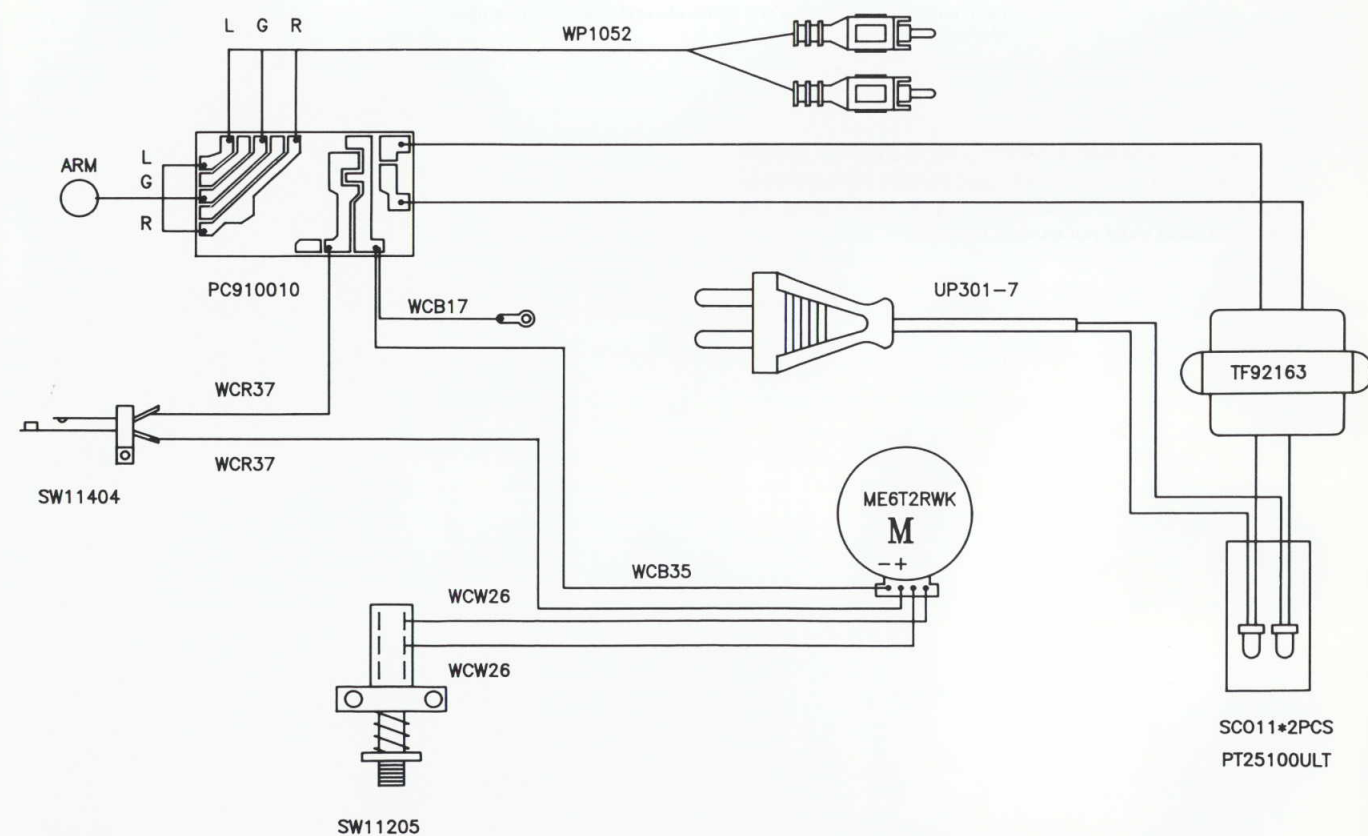
I

Le norme di sicurezza esigono che l'apparecchio venga rimesso nelle condizioni originali e che siano utilizzati i pezzi di ricambio identici a quelli specificati.

"After servicing and before returning set to customer perform a leakage current measurement test from all exposed metal parts to earth ground to assure no shock hazard exist. The leakage current must not exceed 0.5mA."

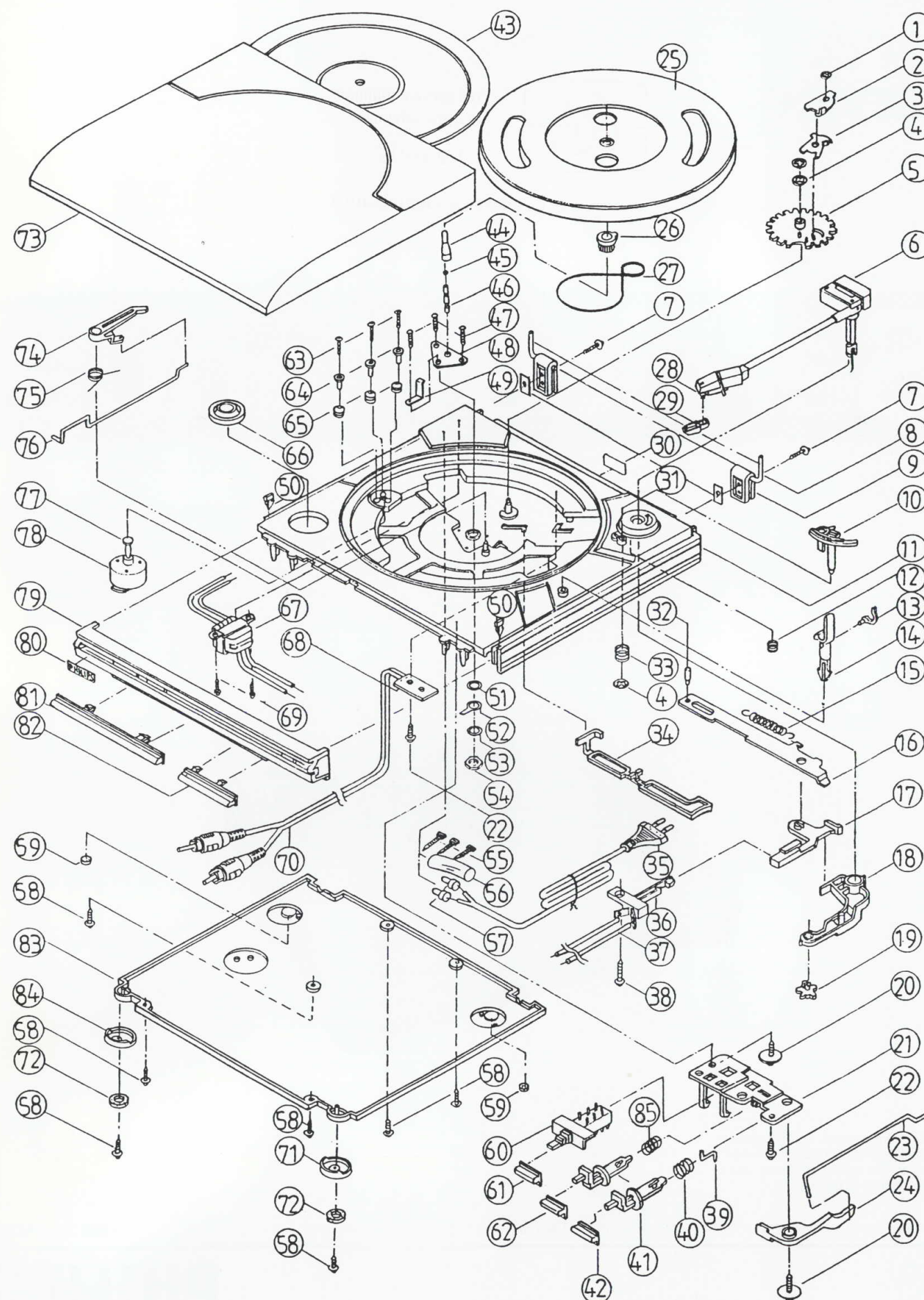


WIRING DIAGRAM

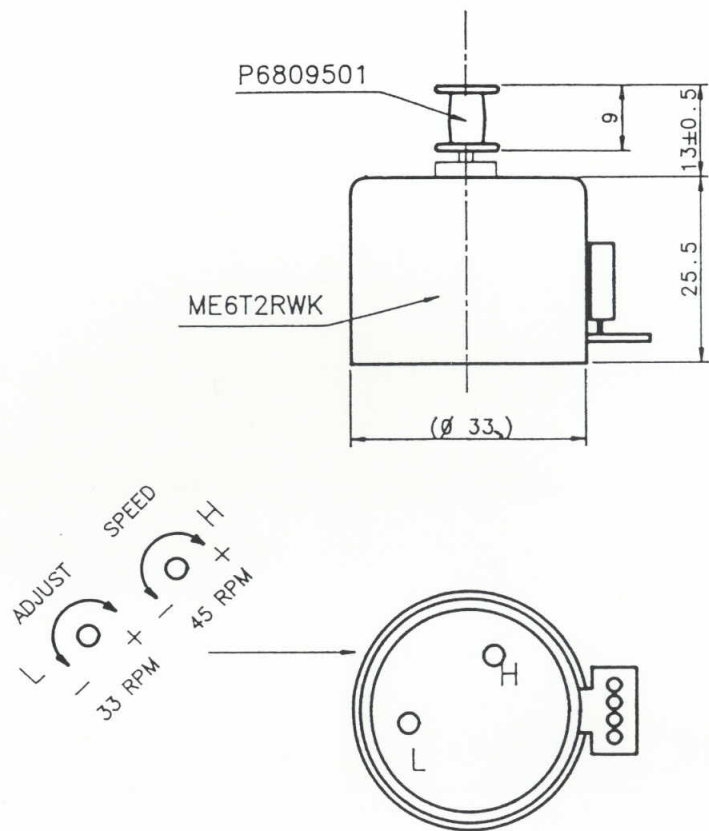


EXPLODED VIEW

MODEL: FP320/00R

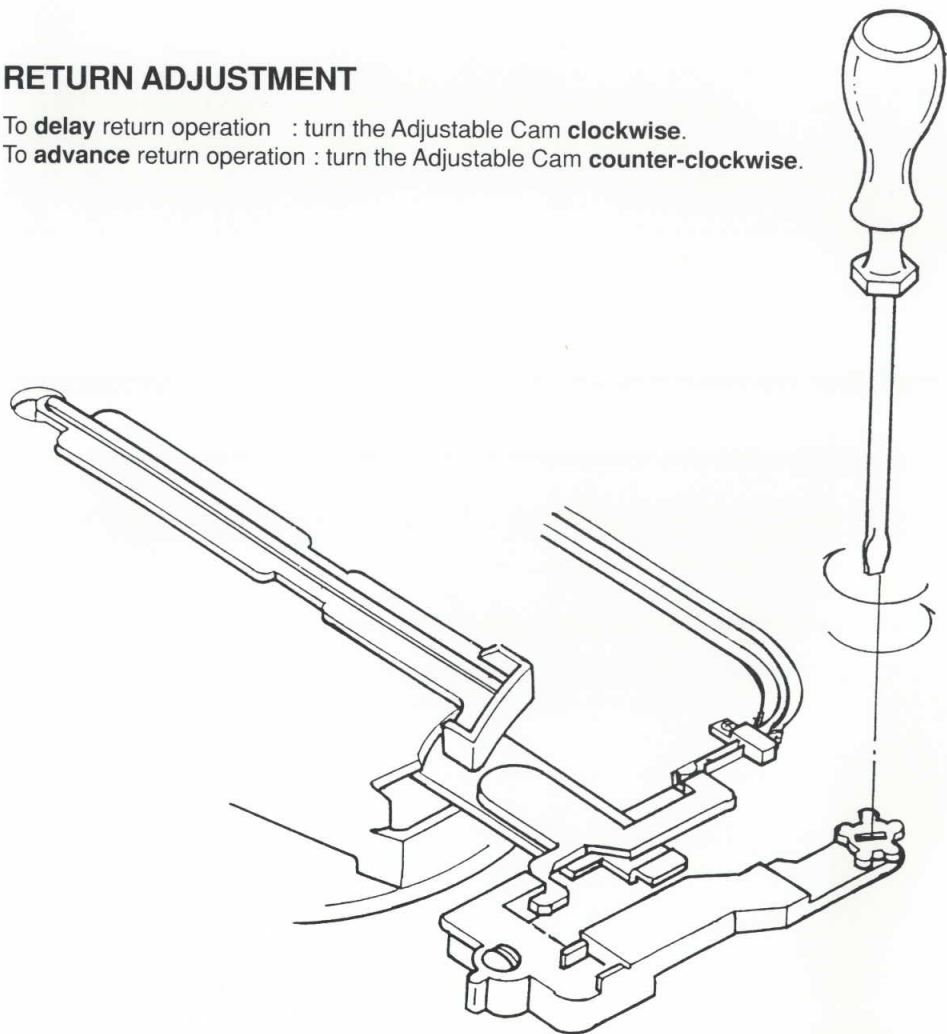


FP320 MOTOR AND ADJUSTMENT



RETURN ADJUSTMENT

To **delay** return operation : turn the Adjustable Cam **clockwise**.
To **advance** return operation : turn the Adjustable Cam **counter-clockwise**.



MECHANICAL PARTSLIST

001	4822 530 80538	042	4822 410 62386	077	4822 528 81489
004	4822 530 80539	043	4822 466 50212	078	4822 361 21305
005	4822 522 32812	045	4822 520 40294	079	4822 444 40621
006	4822 251 70333	050	4822 532 52436	080	4822 459 11116
009	4822 417 11084	057	△ 4822 267 31591	081	4822 444 40618
012	4822 492 71259	059	4822 462 41776	082	4822 444 40617
013	4822 402 61469	060	4822 276 13354	084	4822 462 41986
014	4822 402 61468	061	4822 410 62387	085	4822 492 71261
015	4822 492 71081	062	4822 410 62385		
019	4822 402 61415	064	4822 532 52302		
021	4822 410 62391	065	4822 462 71829		
023	4822 402 50297	066	4822 535 60122		
024	4822 410 62389	067	△ 4822 146 31186		
026	4822 522 33317	070	4822 322 40109		
027	4822 358 31178	071	4822 462 41985		
028	4822 251 30144	072	4822 462 41982		
029	4822 462 41981	073	4822 444 60667		
035	△ 4822 321 10916	074	4822 479 30156		
036	4822 276 13251	075	4822 492 71268		
040	4822 492 70418	076	4822 402 50299		

Note : Only the mentioned parts are normal service parts.

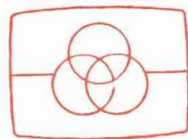
SCREWS

7	D4 x 16	47	D3 x 10
20	D3 x 8	58	D3 x 12
22	D3 x 8	63	M2.6 x 11
38	D2 x 8	69	D3 x 6

Service
Service
Service

Record Player FP320

/00G/01G/05G/10G



Free service manuals
Gratis schema's

Digitized by

www.freeservicemanuals.info

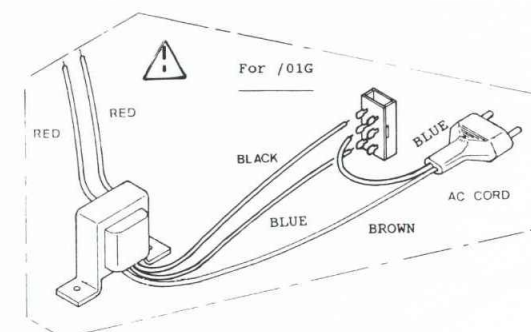
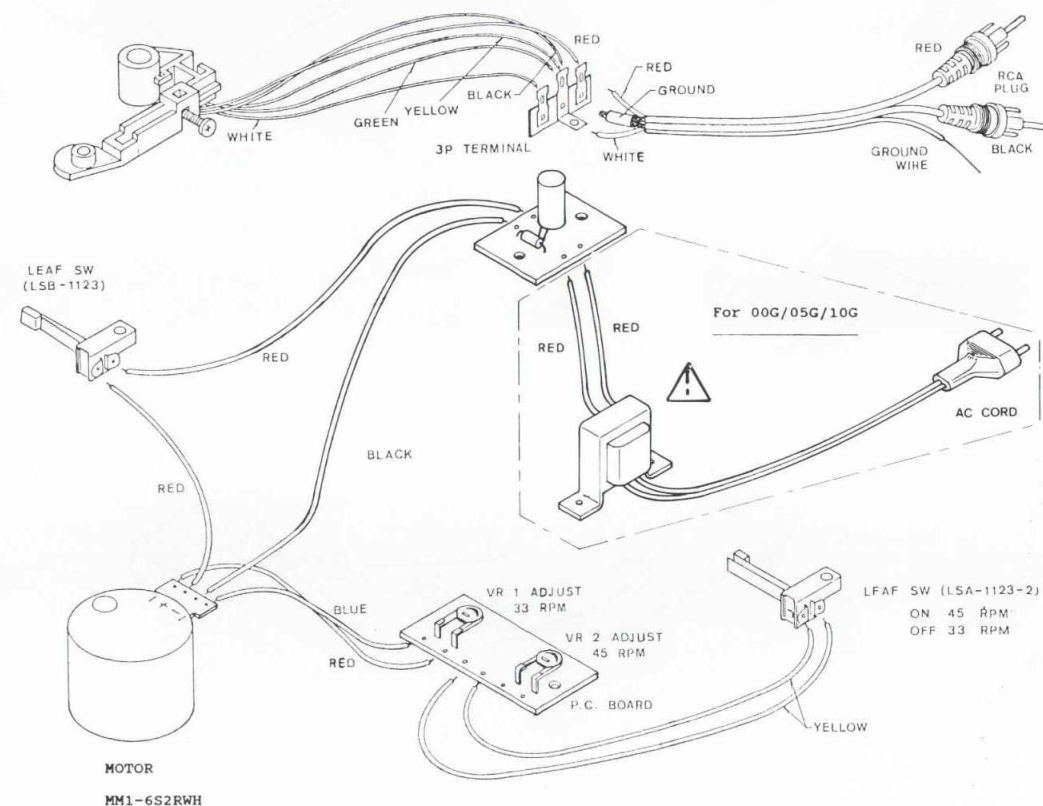
Service Manual

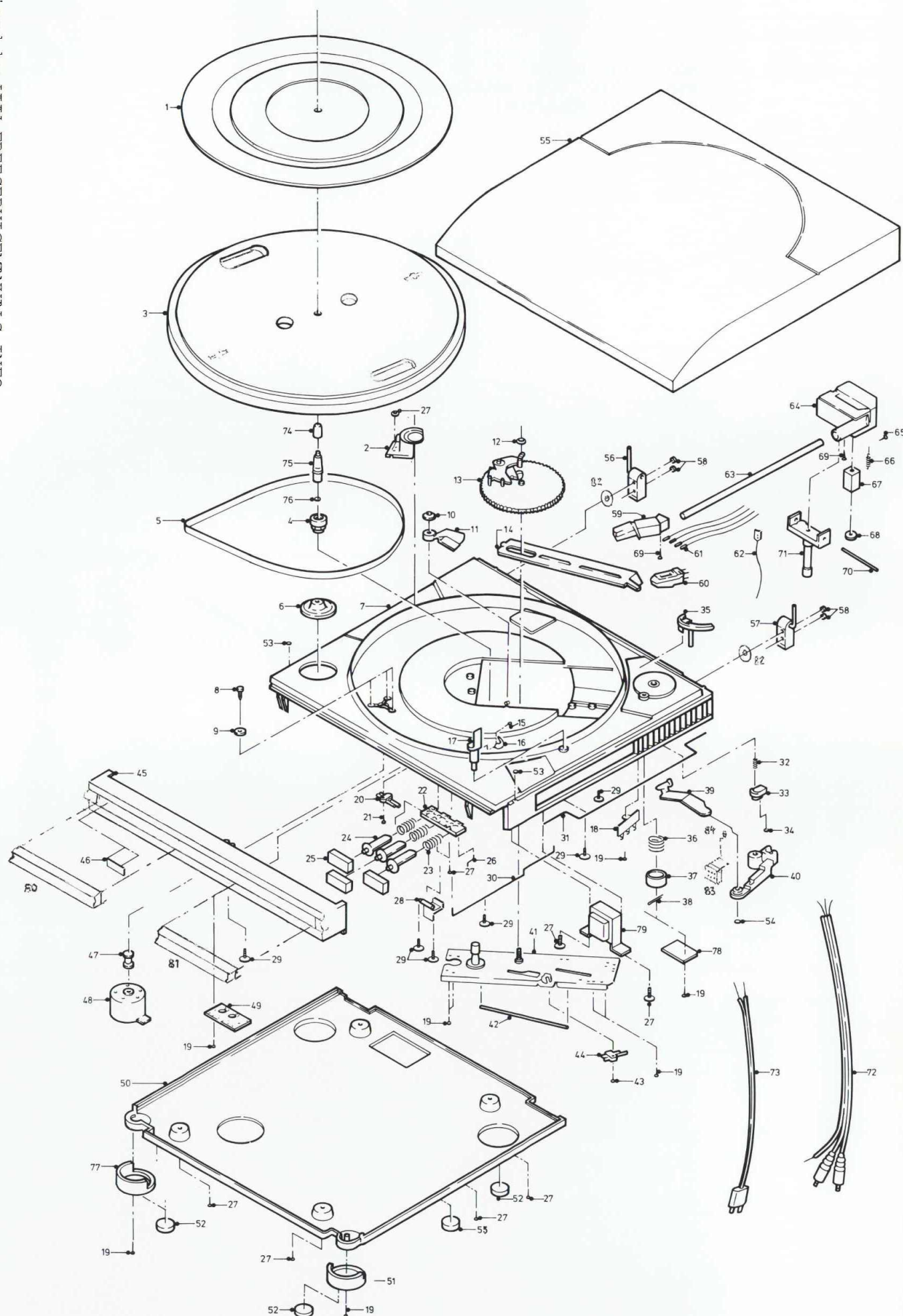


SPECIFICATIONS :

Power supply : 220V 50Hz (For /00G)
110V 60Hz / 220V 50Hz switchable (For /01G)
240V 50Hz (For /05G/10G)

Current : <80mA
Automatic return
Belt drive
45 rpm , 33 1/3 rpm
Wow and flutter : <0.25% (JTS)





SCREWS

10	M3 X 8	34	M3 X 16
19	M3 X 10	43	M2 X 6
21	M2.6 X 8	58	M4 X 15
27	M3 X 12	68	M2.6 X 6
29	M3 X 8	69	M2 X 5

1	4822 466 50207	35	4822 402 61263	60	4822 251 30142
3	4822 528 10758	36	4822 492 52108	63	4822 251 70315
4	4822 535 92928	37	4822 402 61257	64	4822 691 30228
5	4822 358 20355	38	4822 535 92442	65	4822 532 52112
6	4822 535 60109	39	4822 402 61258	66	4822 492 33093
8	4822 502 13333	40	4822 402 30164	70	4822 535 92929
9	4822 325 50171	42	4822 492 42169	71	4822 402 61264
13	4822 522 32748	44	4822 277 60253	72	4822 321 22634
15	4822 502 13332	45	4822 444 30436	74	4822 535 60111
16	4822 402 61261	46	4822 459 11036	75	4822 532 52335
17	4822 402 61262	47	4822 528 81342	76	4822 520 40264
20	4822 278 90614	48	4822 361 21448	77	4822 462 41817
23	4822 492 52109	51	4822 462 41818	79 *	4822 146 30981
24	4822 402 61265	52	4822 462 41816	79 #	4822 146 30982
25	4822 410 61285	54	4822 532 51966	79 @	4822 146 21446
26	4822 492 70278	55	4822 462 71766	80	4822 454 12735
28	4822 402 61259	56	4822 417 11068	81	4822 454 12734
32	4822 492 52111	57	4822 417 11067	83	4822 277 21341

STYLUS 4822 251 30141

@ For -/00G only
* For -/01G only
For /05G/10G only

Only the mentioned parts are normal service parts!

GB

Safety regulations require that the set be restored to its original condition and that parts which are identical with those specified, be used.

NL

Veiligheidsbepalingen vereisen, dat het apparaat bij reparatie in zijn oorspronkelijke toestand wordt teruggebracht en dat onderdelen, identiek aan de gespecificeerde, worden toegepast.

F

Les normes de sécurité exigent que l'appareil soit remis à l'état d'origine et que soient utilisées les pièces de rechange identiques à celles spécifiées.

D

Bei jeder Reparatur sind die geltenden Sicherheitsvorschriften zu beachten. Der Originalzustand des Geräts darf nicht verändert werden; für Reparaturen sind Original-Ersatzteile zu verwenden.

I

Le norme di sicurezza esigono che l'apparecchio venga rimesso nelle condizioni originali e che siano utilizzati i pezzi di ricambio identici a quelli specificati.